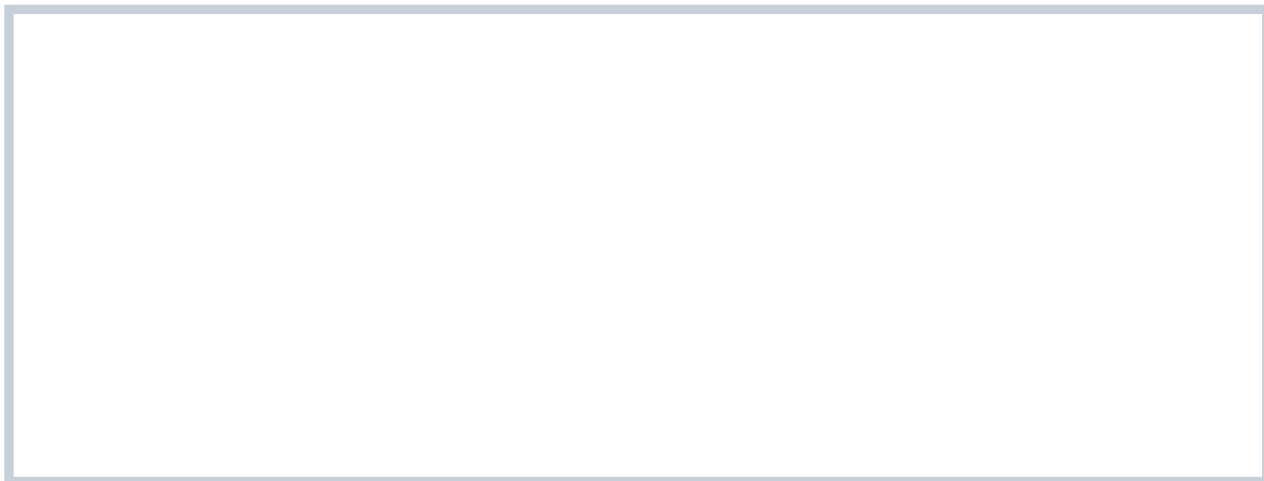


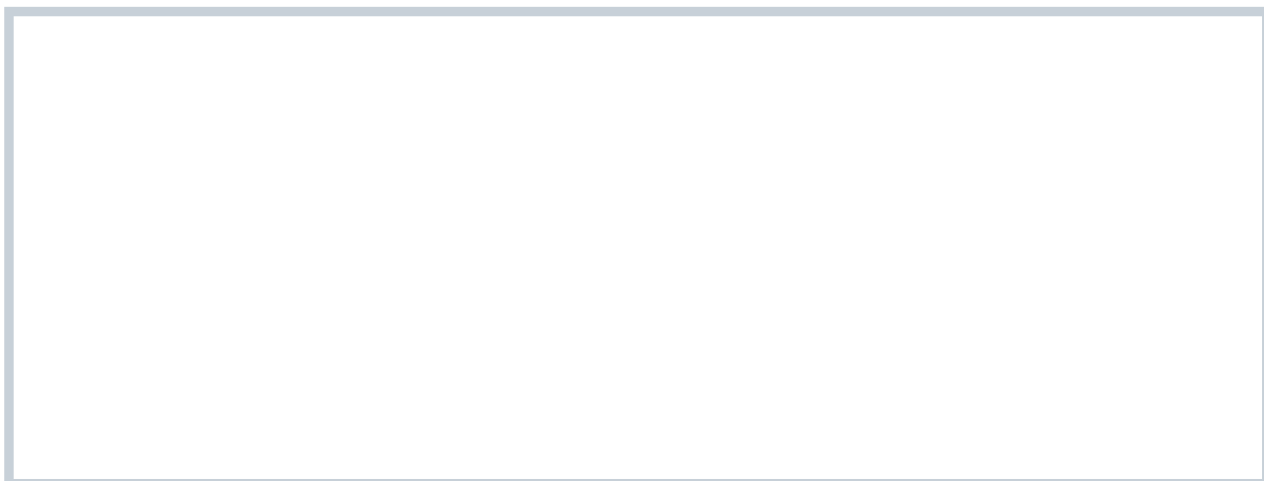
Name:

Date:

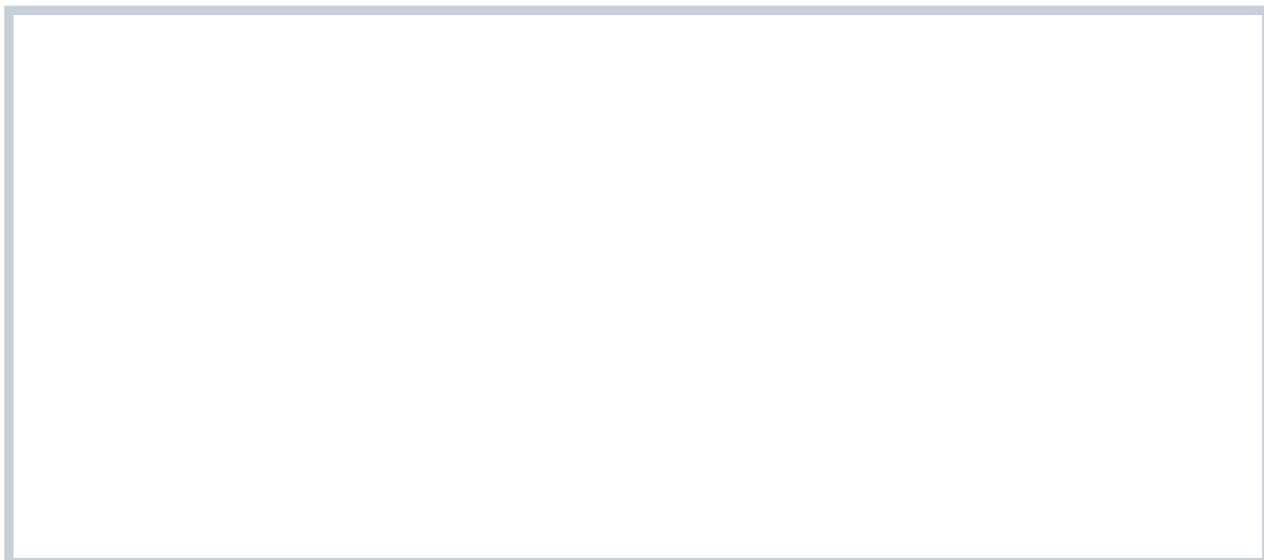
Root #1



Root #2



Measurements



Roots and Shoots

Name:

Date:

Look at Those Leaves



BIG Leaves



Spiny Leaves



Smelly Leaves



Waxy Leaves



Skinny Leaves

Name:

Date:

Day	Weather	Fruit Observations
Day 1		Number of Seeds:
Day 2		
Day 3		

Fruit

Name: _____

Date: _____

How many of each flower parts did you find?

If we move from the outside of the flower towards the inside, the flower parts are:

1. **Sepals:** Thick, green leaf-like structures.

Number of sepals _____

2. **Petals:** Usually brightly colored, right next to the sepals.

Number of petals _____

3. **Stamens:** Stalk-like structure with two parts:

Number of Stamens _____

a. **Filament:** A long stalk from the base of flower to the anther

b. **Anther:** Tiny, balloon-like structure at the top of the anther. Usually has pollen.

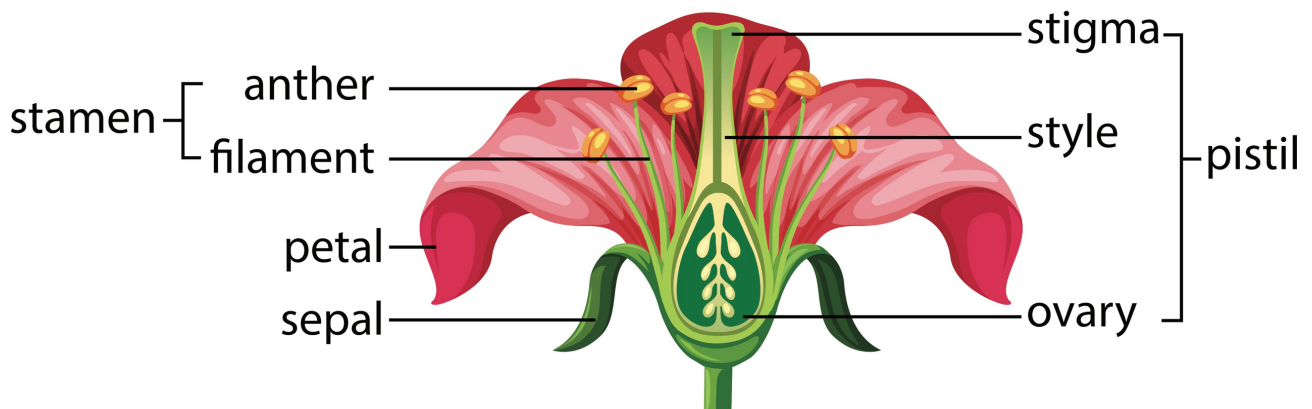
4. **Pistil:** The carpel is the inner most part of the plant and has three parts to it:

a. **Stigma:** the top part – usually this top part is sticky.

b. **Style:** the long stalk that connects the carpel to the circular bottom.

c. **Ovary:** The sphere structure at the bottom of the carpel. Try to open it with your fingernail or scissors.

Common Flower Parts



Flower part

Function of Flower Part

Sepal

Petal

Stamen

Carpel

Name:

Date:

Common Seed Dispersal Methods

GRAVITY

Heavy seeds fall to the ground.



Walnuts fall to the ground and roll

WIND

Lightweight seeds flutter in the air



Dandelion seeds float

WATER

Waterproof seeds float on water



Coconuts float on water for long distances

ANIMALS

Animals either eat seeds or seeds stick to the outside of animals



Cocklebur seeds have little hooks



Seed Observation

Name:

Date:

Harvest Party

Plant	Root	Stem	Leaf	Fruit	Flower	Seed